

BOURKE



25A Flamingo Key Broadbeach Waters QLD

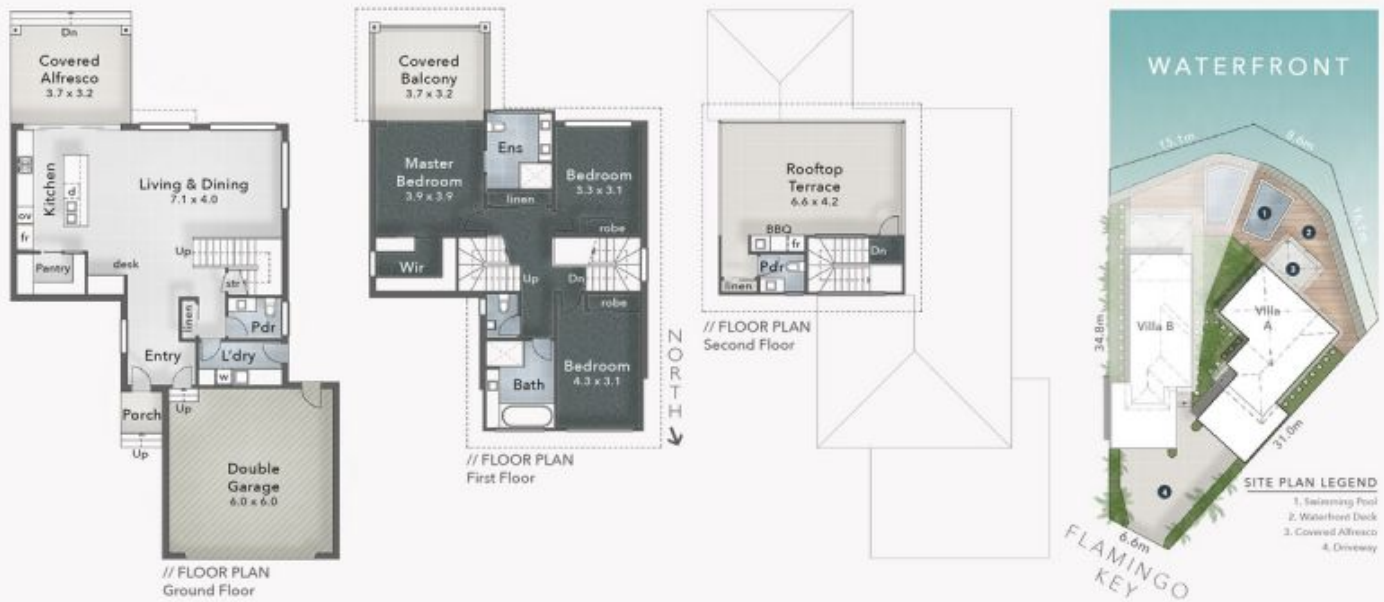
3 3 2

At the end of a quiet cul-de-sac with a memorable name sits this low maintenance, freestanding waterfront home. They are approximately a kilometre from the exciting lifestyle activities Broadbeach offers. The property is tenanted with good returns making this a terrific addition to anyone's property investment portfolio in high growth area

Building Size : 384 sqm
View : <https://www.bourkeqld.com.au/sale/qld/gold-coast/broadbeach-waters/residential/house/6501813>

The newly built haven reveal open plan, high ceiling living spaces that seamlessly transition to the surrounding alfresco, easy care deck and glittering pool. The kitchen is complimented by the walk-in pantrie, stone top island benches and Miele appliances which are ideal for entertaining family and friends.

The light filled interiors over 3 levels have been designed for modern living and to capture the canal and iconic skyline views. The views illustrate the homes' proximity to



25A Flamingo Key
BROADBEACH WATERS

FLOOR AREA SIZES
Internal 265m²
Alfresco, Balcony & Porch 32m²
Total 297m² or 32 Squares

PROPERTY DETAILS
- 3 Bed + Study Nook
- 2 Bath + 2 Powder
- 2 Car



pure design PLANS FOR PURPOSE

The overall presentation style, layout, imagery, fonts, background, colours and terminology are subject to strict copyright of Pure Design Concepts. No ownership is taken for building design. All measurements are approximate & individuals should rely on their own information. Find out more at puredesignconcepts.com.au