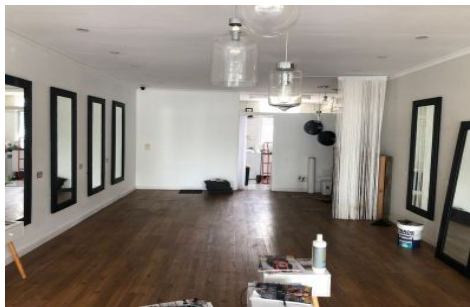


BOURKE



6/1-6 Naranga Avenue Broadbeach Waters QLD

60 sqm Premises
Great Parking
Affluent Residential Area
Rear Street Access
Competitive Rental
Suit Retail, Hospitality or Office

Building Size : 60 sqm
Land Size : 60 sqm
View : <https://www.bourkeqld.com.au/lease/qld/gold-coast/broadbeach-waters/commercial/retail/6502362>