

BOURKE



30 First Avenue Broadbeach QLD

2 2 1

Enjoy the wonders of Broadbeach from a luxurious Amaya residence that encapsulates the balance of lifestyle and luxury with convenience.

Once you step outside your door, Broadbeach offers the best in outdoor living and cultural attractions coupled with sophistication. Stretching 33 stories high towards the sky and central between the sea and the river, Amaya has been designed to create constant connections with nature, from the spectacular views of the Hinterland and the ocean waves to the greenery that weaves through the podium amenities and lobby.

? Luxury residences with just four apartments per level
? Coastal luxe architecture and interior design style by internationally renowned and Gold Coast-based design firm, DBI Design

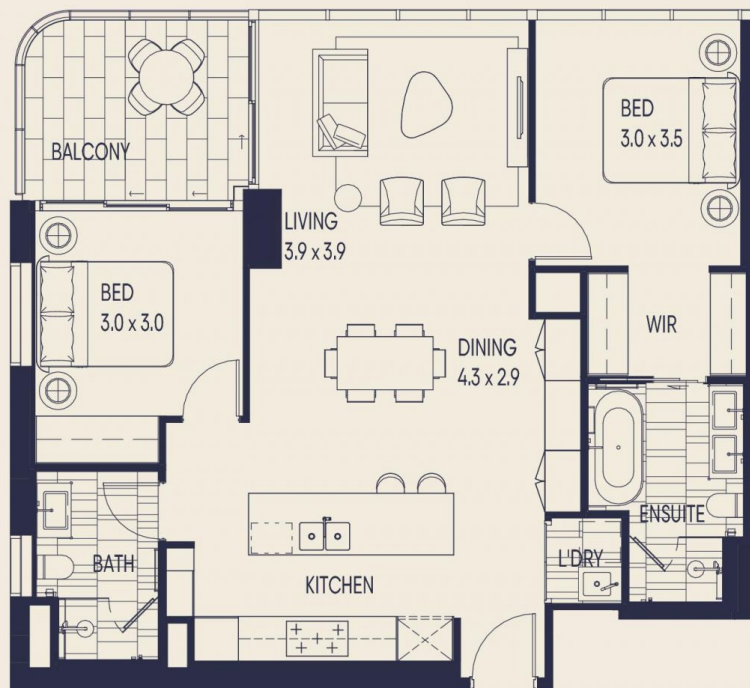
Price : \$799,000

View : <https://www.bourkeqld.com.au/sale/qld/gold-coast/broadbeach/residential/apartment/7261424>

<https://www.bourkeqld.com.au>

AMAYA

Broadbeach



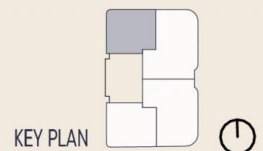
Floor Plan

Unit Type 01 - 2 Bedroom

Area: Total: 101m² | Internal: 92m² | External: 9m²



SCALE 1:100 @ A4 0 0.5 1 2M

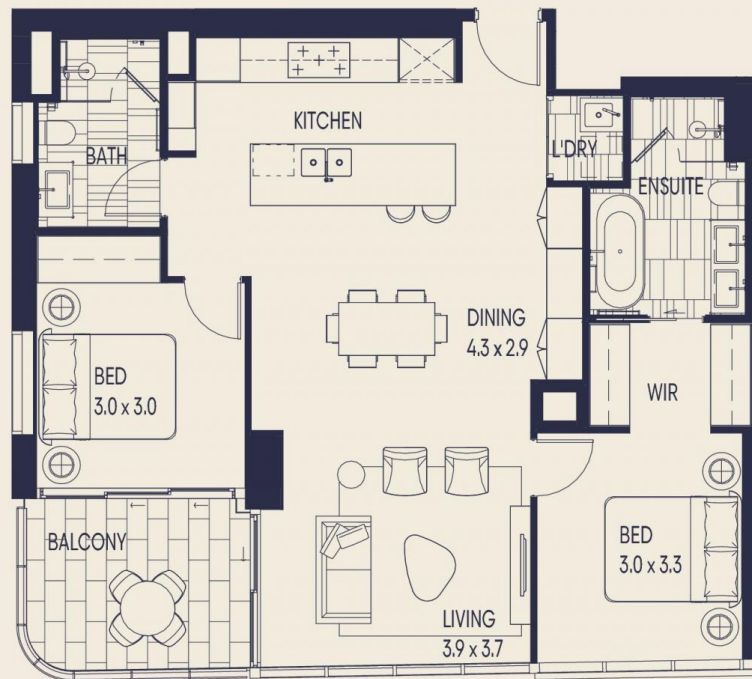


amaya-broadbeach.com.au

These plans are intended as a guide only. The measurements, dimensions and areas are approximate only and may not accurately represent the actual measurements, dimensions and areas of the apartments or the spaces within them and are subject to change without notice. In addition, locations of utilities may vary during construction and fittings, fixtures and chattels as shown on these plans are for illustrative purposes only. These plans (including anything referred to in the plans) do not form part of the contract of sale and no warranty is provided in respect of the contents of the plans. Prospective purchasers must rely on their own enquiries and should refer to the contract of sale and its schedules for all matters to be included in the purchase price of the apartment, including any finishes, fixtures, fittings, appliances and other particulars of sale. Whilst every effort is made to provide accurate and complete information to purchasers, the developer does not warrant or represent that the information in this floorplan is free from errors or omissions or is suitable for purchasers' intended use. Subject to any terms implied by law which cannot be excluded, the developer accepts no responsibility for any loss, damage, cost or expense (whether direct or indirect) by purchasers as a result of any error, omission or misrepresentation in information.

AMAYA

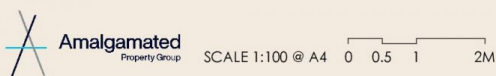
Broadbeach



Floor Plan

Unit Type 04 - 2 Bedroom

Area: Total: 100m² | Internal: 91m² | External: 9m²



amaya-broadbeach.com.au

These plans are intended as a guide only. The measurements, dimensions and areas are approximate only and may not accurately represent the actual measurements, dimensions and areas of the apartments or the spaces within them and are subject to change without notice. In addition, locations of utilities may vary during construction and fittings, fixtures and chattels as shown on these plans are for illustrative purposes only. These plans (including anything referred to in the plans) do not form part of the contract of sale and no warranty is provided in respect of the contents of the plans. Prospective purchasers must rely on their own enquiries and should refer to the contract of sale and its schedules for all matters to be included in the purchase price of the apartment, including any finishes, fixtures, fittings, appliances and other particulars of sale. Whilst every effort is made to provide accurate and complete information to purchasers, the developer does not warrant or represent that the information in this floorplan is free from errors or omissions or is suitable for purchasers' intended use. Subject to any terms implied by law which cannot be excluded, the developer accepts no responsibility for any loss, damage, cost or expense (whether direct or indirect) by purchasers as a result of any error, omission or misrepresentation in information.