

BOURKE



20/2 Margaret Street Pimpama QLD

4  2  2 

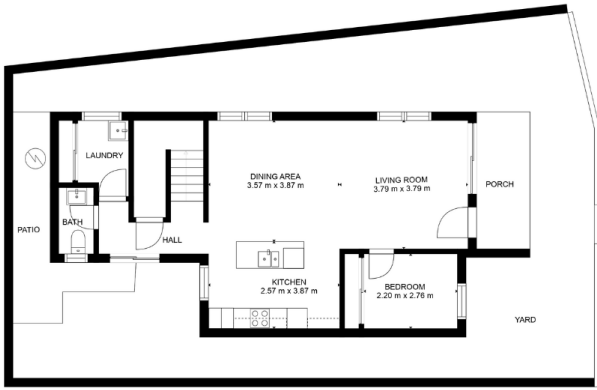
Centrally located between Brisbane and the Gold Coast, Pimpama is one of the region's strongest growth areas and the most in-demand suburbs for young families and investors, as it represents fantastic value, a convenient location, and excellent amenities.

This free-standing four-bed, two-bath townhouse provides an exceptional opportunity, with the downstairs offering a very generous lounge and dining adjoining a spacious kitchen with Caesar stone bench tops and stainless steel appliances, a study or 4th bedroom plus a guest powder room, and separate laundry. This attractive property is available now, so act quickly to move in or secure rental revenue before Christmas.

Upstairs the large master bedroom enjoys a private balcony and en-suite, with the second and third bedrooms

Price : \$ 560,000
Building Size : 135 sqm
Land Size : 185 sqm
View : <https://www.bourkeqld.com.au/sale/qld/gold-coast/pimpama/residential/townhouse/7288669>

<https://www.bourkeqld.com.au>



Ground Floor



First Floor