




BOURKE



87/7 Angela Way Pimpama QLD

3  2  2 

Immaculately presented, this luxury near new townhome is easily the best presented in the estate, with upgraded stunning oak hard wood timber stair case, custom designed colour scheme, manicured gardens and upgraded features throughout.

Situated in the exclusive, modern, boutique complex The Gawthorn Terraces, offering resort style amenities, featuring an enormous pool with undercover bbq and entertainment area, a second park with bbq area and lush landscaped gardens. This stunning property is conveniently located approximately half way between Brisbane and the Gold Coast. Offering an easy commute to both CBD's.

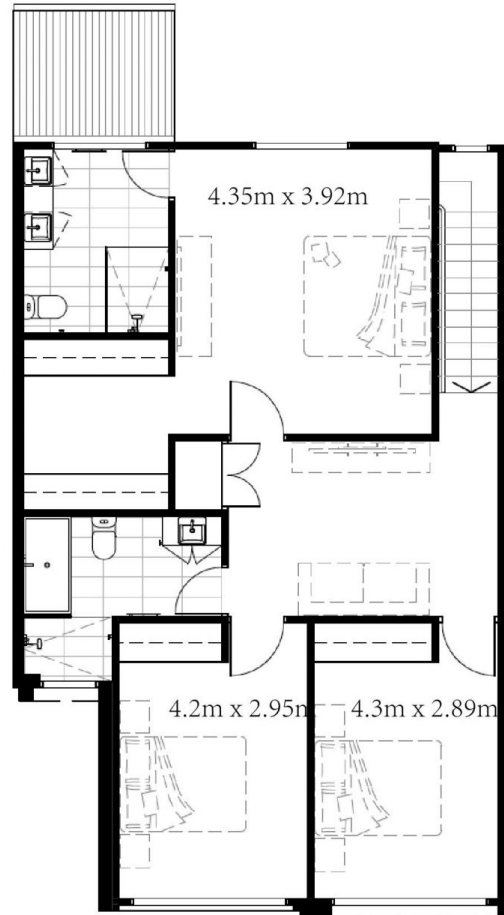
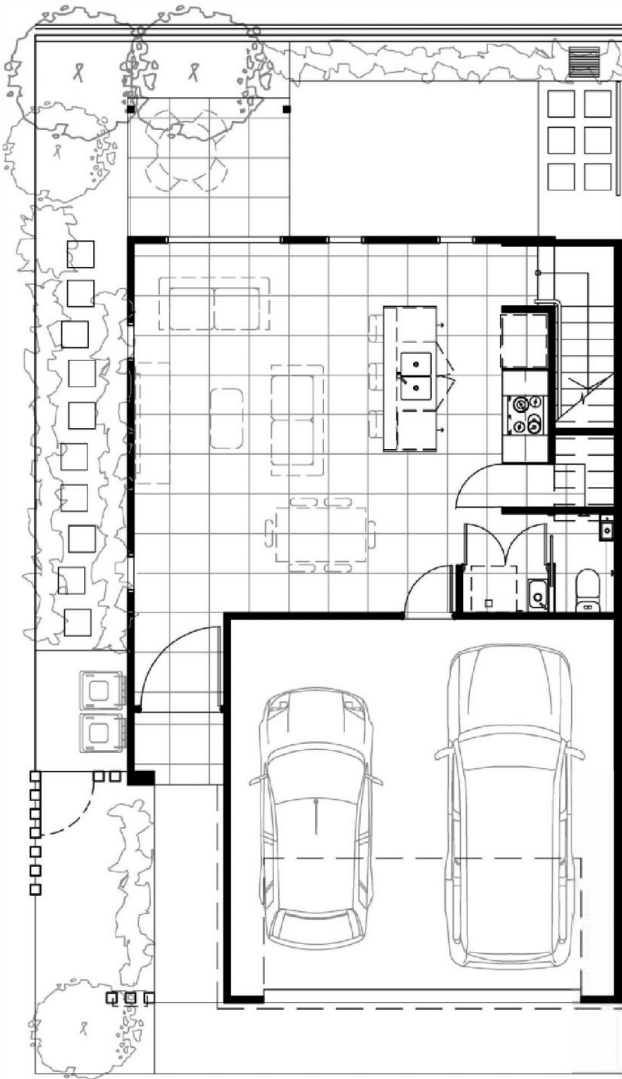
Spread across two levels, featuring 3 bedrooms, 2 living areas, 2 bathrooms, double lockup garage, an open plan kitchen/living/ dining plus an additional powder room downstairs.

Price : \$ 595,000
Building Size : 160 sqm
View : <https://www.bourkeqld.com.au/sale/qld/gold-coast/pimpama/residential/townhouse/7382492>



Dylan Molloy
07 5570 3300

THE GAWTHERN Terraces



Stage 2 & 3

3 bedroom, Double garage

Areas:

lower floor

Garage: 33.29m²

Living & Dining: 25.23m²

Total lower floor internal: 80m²

Cover terrace: 6.3m²

Areas:

Upper floor

Total upper floor internal: 80m²

Total internal: 160m²