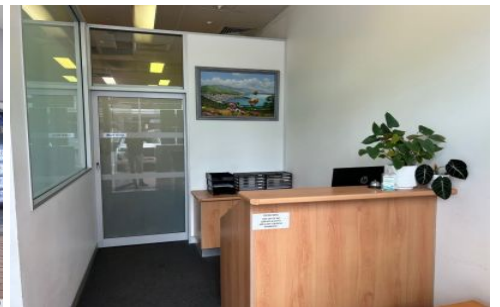
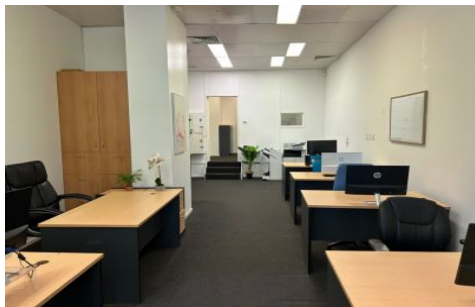


# BOURKE



## 17/24 Queensland Avenue Broadbeach QLD

This commercial space is part of the Phoenician Complex which is rightfully considered the Heart of Broadbeach. This central location offers many advantages to businesses in the area including an abundance of locals and visitors enjoying the laid-back Broadbeach vibe on a daily basis. The premises was previously used as a Real Estate Office but can be used for a number of other retail possibilities. The property is located amongst some of the Gold Coast's top restaurants and entertainment venues such as Star Casino, Pacific Fair, Oasis Shopping Centre and Gold Coast Convention & Exhibition Centre.

<b>Price</b>	: \$ 852,500
<b>Building Size</b>	: 86 sqm
<b>Land Size</b>	: 7500 sqm
<b>View</b>	: <a href="https://www.bourkeqld.com.au/sale/qld/gold-coast/broadbeach/commercial/offices/7431819">https://www.bourkeqld.com.au/sale/qld/gold-coast/broadbeach/commercial/offices/7431819</a>

### Property Features Include:

- Good sized retail or office space of 86m2 in the heart of Broadbeach
- Rental appraisal between \$700 to \$750 per metre

<https://www.bourkeqld.com.au>