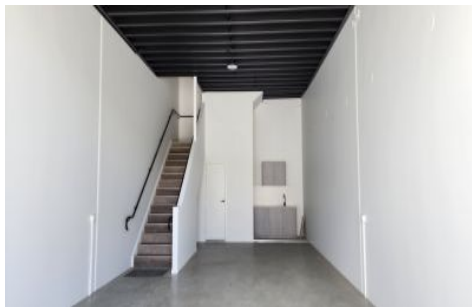


BOURKE



9/23 Margaret Street Southport QLD

- 122m2 NLA
- Warehouse/storage of 67m2 with fully air-conditioned mezzanine office of 55m2
- High-end industrial complex
- Fully fenced with CCTV and new Roller Gate at entrance
- Concrete tilt panel construction
- Polished concrete floors
- Large electronic roller door (3m wide x 4.5m high) remote controlled
- 4.3m clearance below mezzanine
- Toilet, shower and kitchenette on the ground floor
- LED lighting

Building Size : 122 sqm

View : <https://www.bourkeqld.com.au/lease/qld/gold-coast/southport/commercial/industrial/7531819>

23 Margaret Street is a superior offering due to:

- Large turning circle perfect for boat & caravan maneuvering
- Shared car parking and truck bay